

V1.0_19A22

MF180 - MF180L

Wireless 4G LTE 150Mbps



Micro SD



CPU



10+1 Devices

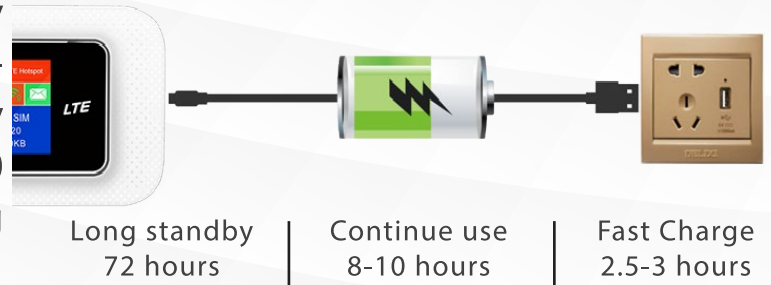


2100mAh

SELLING POINTS

Long-lasting performance

Up to 2100mAh battery capacity and smart energy-saving technology reduces power consumption by up to 30%, gives you up to 8-10 hours of battery life and waiting time is 72 hours.



Wi-Fi for everyone

Supports up to 10 wireless access devices and a separate wired connection. Users can share Wi-Fi easily with loved ones around.

SELLING POINTS

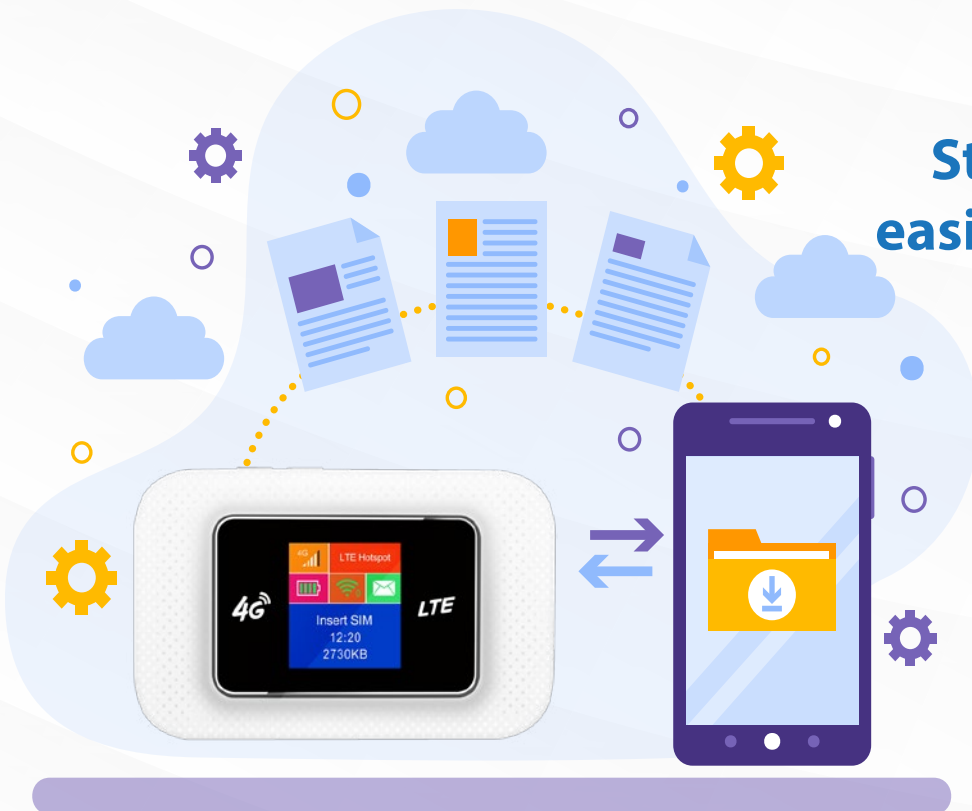
High-quality CPU

Using high-quality CPU from Qualcomm helps to increase the stability of the device during operation.



Store and share data easily with HTTP Share

Equipped with a memory card slot up to 32GB and built-in HTTP Share feature, users can comfortably store and share data with other connected devices, network.



SPECIFICATIONS

| | MF180 | MF180L |
|------------------------------|---|---|
| Hardware | | |
| Interface | - Sim Card | - Micro SD Card - Micro USB 2.0 |
| External Power Supply | - 5V DC/ 1A | |
| Button | - 1* Power | - 1* WPS - 1* Reset |
| Display | - 1* Pin - 1* Signal Strength - 1* Wireless (LED) - 1* SMS | - Pin - Signal Strength - Wireless (LCD) - SMS - Usage Data |
| Micro SD card Reader | - Up to 32GB | |
| Dimensions | - 93 x 60 x 13.9mm | |
| Battery | - 2100mAh 3.8V | |
| Weight | - 82g | |
| Wireless | | |
| Standards | - IEEE 802.11n, IEEE 802.11g, IEEE 802.11b | |
| RF Frequency | - 2.4GHz | |
| Data Rate | - 150Mbps | |
| EIRP | < 20dBm | |
| Encryptions | - WEP, WPA - WPA2 PSK | |
| Signal Type | - LTE CAT 4: FDD band: 1 3 5 7 8 TDD band: 38 40 41 | - WCDMA: Band: 1 8 |
| 4G Speed | - Download: 150Mbps - Upload: 50Mbps | |

SPECIFICATIONS

| | MF180 | MF180L |
|------------------------|---|---|
| Software | | |
| Network | - 3G/ 4G Setting | - APN Setting |
| Wireless | - WPS | |
| Firewall | - MAC/ IP/ Port Filtering - Port Mapping | - UPnP - DMZ |
| Advanced | - HTTP Share - Data Limited - Power Save | - USSD - SMS - Phone Book |
| Others | | |
| Package Content | <ul style="list-style-type: none"> - 1* Mi-Fi 4G LTE Device - 1* Li-on Battery - 1* Micro USB Cable - 1* Quick Installation Guide | |
| Enviroment | <ul style="list-style-type: none"> - Charging Temperature: - Operating Temperature: - Storage Temperature: | <ul style="list-style-type: none"> 0°C~40°C (32°F ~104°F) -20°C~50 °C (-4°F ~122°F) -40°C~70 °C (-40°F ~158°F) |