

CP300

300Mbps 2.4G Band Wireless-N Outdoor AP/Client



IP65 Protection



Repeater Mode



Long Distance

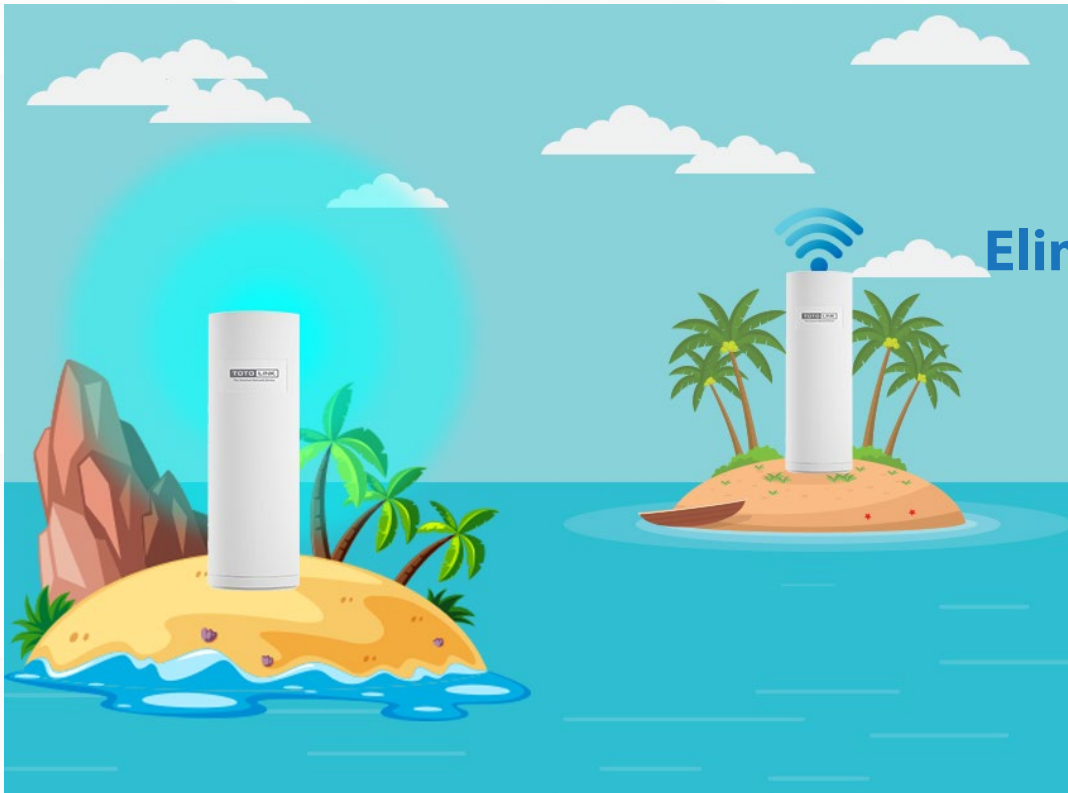


LEDs Intelligent

SELLING POINTS

Extend wave mode

Users can use CP300 as a professional wave extender to further expand the coverage of the main router.



Eliminate distance worries

With a built-in high-performance antenna and advanced Wi-Fi signal optimization technology, support the CP300 broadcast distance up to 3Km.

SELLING POINTS

IP65 water and dust resistance standard

Protected by the IP65 water proof and dirt proof standard, helping the CP300 work well in any environment.

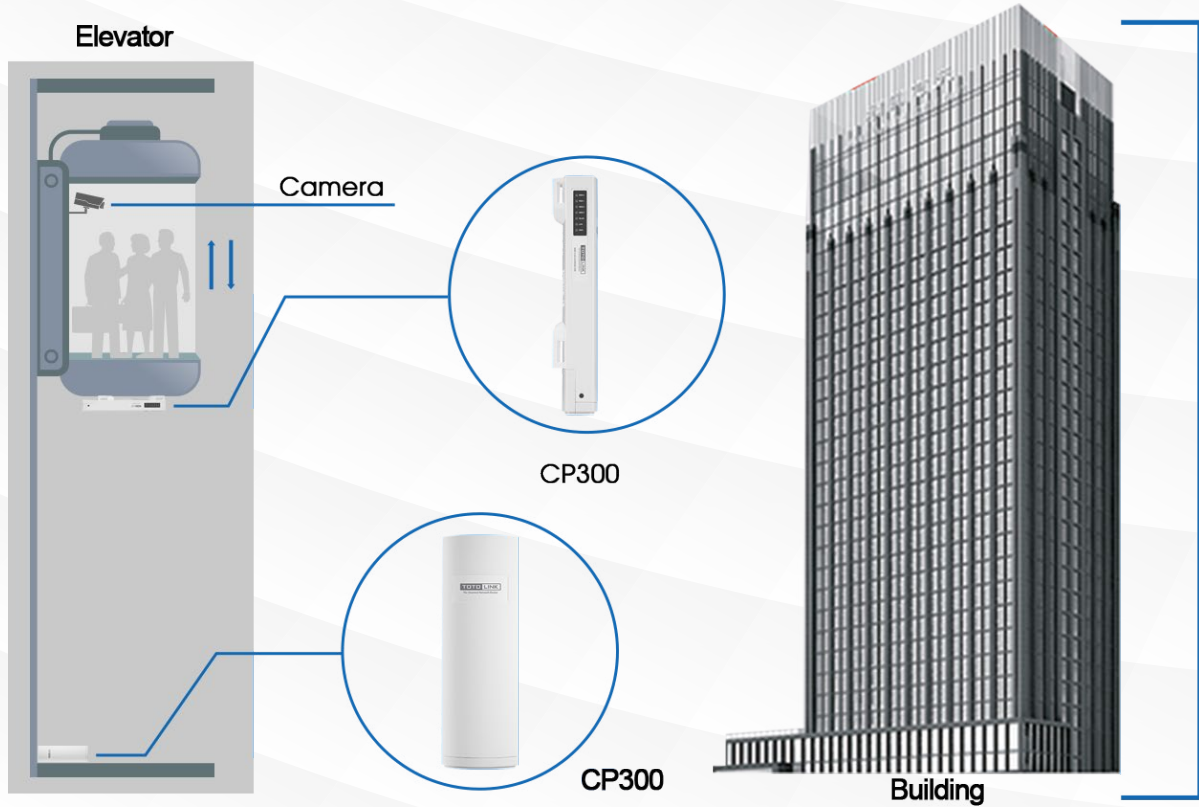


Intelligent LEDs

Users can determine the signal level that the CP300 emits based on the smart signal range.

SOLUTIONS

In the wide broadcasting area, it is easy to install and manage TOTOLINK CP300, which is the right device for network solutions for elevator, resorts, construction, ... Users can refer to the following installation solution:



Wi-Fi for Elevator - Model Overview



Wi-Fi for Elevator - Detailed Model

SPECIFICATIONS

Hardware	
Chipset	- RTL8196E + RTL8192ER
Flash	- Default 4MB SPI Nor Flash
SDRAM	- Default 32MB SDRAM
Interface	- 1* 100BaseTX (Auto MDI/MDIX) LAN Port (Passive PoE Supported)
Power Supply	- 12V DC/ 1A (PoE)
Button	- 1* Reset
Antennas	- 2* 11dBi Internal Antennas
LED Indicators	- 1* Power - 1* LAN - 1* WLAN - 4* Signal Strength
Wireless	
Standards	- IEEE 802.11b - IEEE 802.11g - IEEE 802.11n - IEEE 802.3u - IEEE 802.3
RF Frequency	- 2.4 ~ 2.4835GHz
Data Rate	- 802.11n: up to 300Mbps - 802.11g: up to 54Mbps (dynamic) - 802.11b: up to 11Mbps (dynamic)
Security	- 64/128bit WEP, WPA/WPA2, WPA Mixed
Channels	- 1-11 (North America) - 1-13 (General Europe) - 1-14 (Japan)
Reception Sensitivity	- 11M: -81dBm@ 10% PER - 54M: -68dBm@ 10% PER - HT20 MCS7: -65dBm@ 10% PER - HT40 MCS7: -62dBm@ 10% PER

SPECIFICATIONS

Software	
Operation Mode	<ul style="list-style-type: none"> - AP - Client - WISP - Repeater
Network	<ul style="list-style-type: none"> - LAN Setting - Static DHCP Setup
Wireless	<ul style="list-style-type: none"> - Basic Setting - Advanced Setting - WDS Setting - Access Control - WPS Setting
Management	<ul style="list-style-type: none"> - Upgrade Firmware - Save/ Reload Setting - Time Zone Setting - Password Setting - Reboot Schedule - Reset Default
Others	
Package Contents	<ul style="list-style-type: none"> - 1* CP300 Wireless Outdoor AP - 1* Adapter 12V DC/1A - 1* Ethernet Cable - 1* Quick Installation Guide - 1* PoE Injector - 2* Strips
Environment	<ul style="list-style-type: none"> - Operating Temperature: 0°C~40 °C (32°F ~104°F) - Storage Temperature: -40°C~70 °C (-40°F ~158°F) - Operating Humidity: 10%~90% non-condensing - Storage Humidity: 5%~95% non-condensing

